

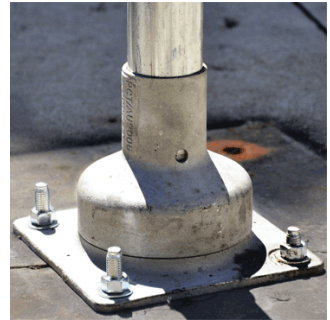


**AirmasterSigns**

## **SPRINGY-BASE™**

Spring Return Sign Post

- Impact tested at 70 km/h without damage
- After only 1 impact it has paid for itself
- Stable in the wind and will not lean into traffic
- Made from steel so it's tough
- Low ground clearance when bent over
- On-site replaceable posts
- Can be colour suited to surroundings
- Yield under impact
- Self recovers
- Re-orientates to original position



### **Springy Base Carrying Capacity**

**5'3" post - 1 - 24in x 18in AL Sign**

**4'4" post and less - 2 - 24in x 18in AL Sign**

### **Tall Springy Base Carrying Capacity**

**9' post - 1 - 24in x 24in AL Sign**



NEED A CUSTOM ORDER? CALL US AT 1-800-788-6805 OR IN WINNIPEG 204-944-7446  
OR EMAIL US AT [SIGNS@AIRMASTERSALES.COM](mailto:SIGNS@AIRMASTERSALES.COM) TO DISCUSS YOUR SPECIFIC NEEDS